



*God the Creator says, I am who I am. I am the Alpha and the Omega, the Beginning and the End.
 Jesus says, I am the Bread of Life. I am the Light of the World. I am the Good Shepherd.
 Each one of us is made in the image of God and joined to Christ in baptism.
 We live out a variety of roles and relationships, but share a common identity.*

Who are YOU?

*Who would you be if you really trusted that you were made in the image of God?
 How can we discover God's liberating message for us as we
 come together at the Southern Idaho Women's Retreat?*

*Come for stimulation,
 relaxation, great food
 and fun!*

**I AM
 WHO
 I AM**

*Luther Heights Bible Camp
 July 17-19, 2009*

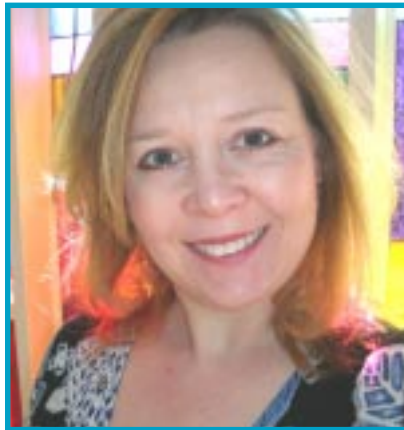
- GUEST SPEAKERS -

GAYLE BINTLIFF



Gayle is the pastor of Lake of the Isles Lutheran Church in Minneapolis, Minnesota. She was the associate pastor at Shepherd of the Valley in Phoenix, AZ for 4 and a half years and was an interim associate pastor at Central Lutheran in downtown Minneapolis prior to accepting the call to Lake of the Isles. Gayle spent a wonderful year as the intern pastor at Immanuel Lutheran in Boise in 1999-2000. She is married to Jay Hornbacher, has three grown children, and four amazing grandchildren. Gayle considers it a privilege to be a pastor of the church, loves to preach, and likes to encourage all people in their own daily ministries. She enjoys time with her family, reading on the porch when winter finally ends, coffee, chocolate, and being at her cabin in Detroit Lakes, Minnesota when she gets the time.

JULIE BLUM



Pastor Julie Blum has served as Pastor of Maple Leaf Lutheran Church in Seattle, WA since 2002. Prior she served as Pastor of Immanuel Lutheran Church in Boise, ID from 1998 to 2002. She received a BA from Pacific Lutheran University in Tacoma, WA, a Master of Divinity from Luther Seminary in St. Paul, MN and the first year of a Doctor of Ministry degree from Seattle University. She currently serves on the Board of Directors for the Hearthstone: Retirement Living, the NW WA Synod's Discipline Committee and Bishop's Convocation Team. She enjoys reading, gardening and traveling.



**I AM
 WHO
 I AM**

REGISTRATION
*Luther Heights Bible Camp
 July 17th - 19th
 \$65 before July 1 - \$70 after July 1*

Name: _____
 Email: _____ Phone: _____
 Address: _____

Mail Registration With Check To: Maxine Johnston, 607 W. Gettysburg, Boise, ID, 83706, 208.344.0940
Make Checks Payable To: Luther Heights Bible Camp

Questions: Patty Larson, LymanL@CableOne.net or 208.343.2667